

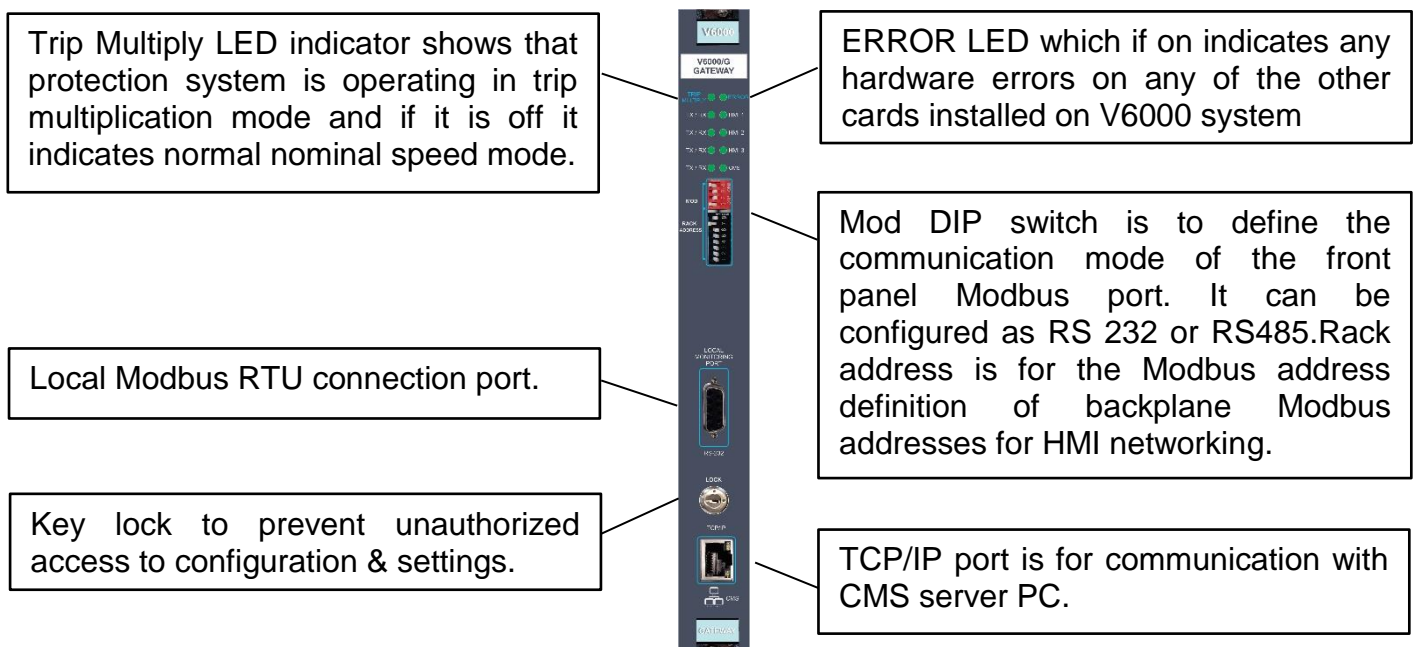
V6000/G Gateway Card

Datasheet

V6000/G Gateway card

Gateway card is responsible for communications of each V6000 protection system with outside world. There are four connection ports available for each gateway card. Three of them are Modbus RTU protocol to interface with local display, remote PLC/DCS systems and HMI panels and there is one TCP/IP Ethernet port for data transmission to condition monitoring software installed on server PC. Server can share these gathered data to client PCs on a different network. Two control inputs are available on V6000/G card rear panel:

- General Reset: This to reset (clear) & bypass all the active (latched) relays
- Trip Multiply: To selectively increase the alarm & trip levels by a user definable multiplying factor



V6000/G Front Panel Elements

MODBUS PORTS

